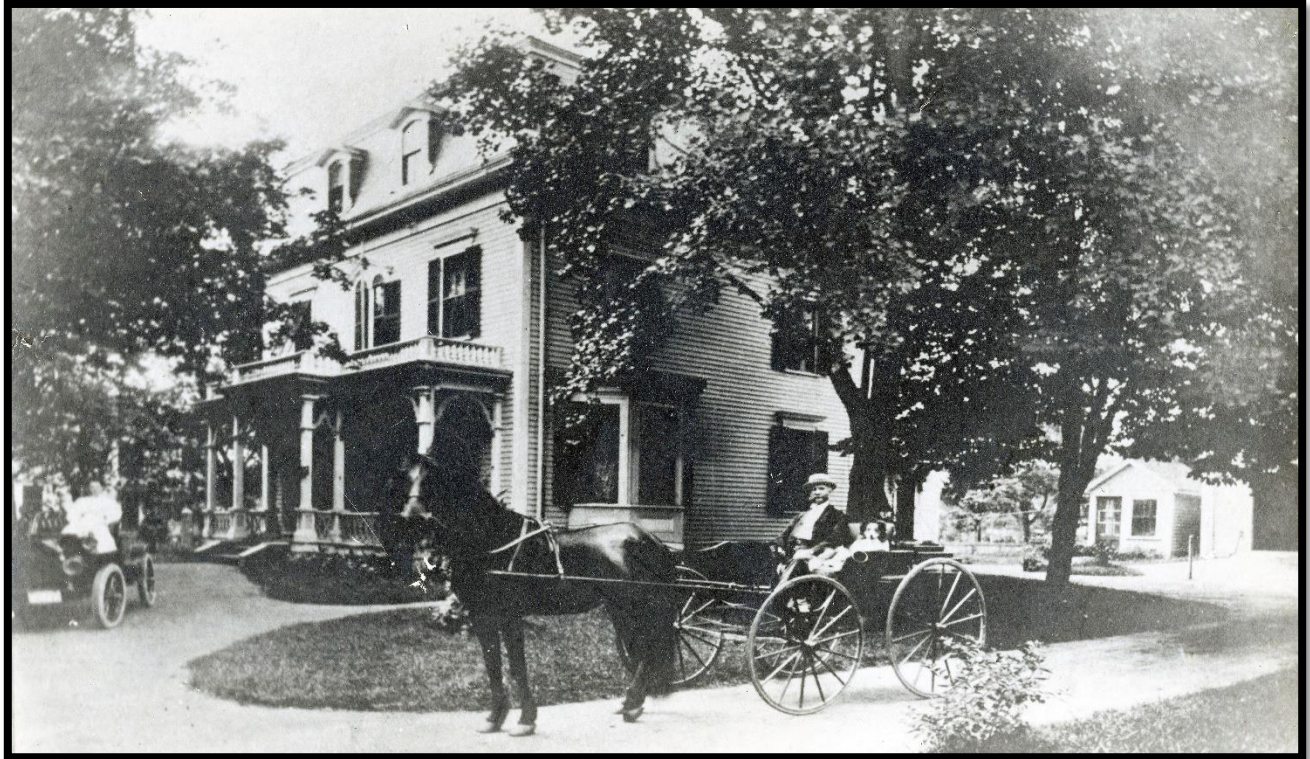


Four Victorian Houses



Dr Albert Kingsbury in front of 1175 Great Plain, circa 1920

- 1167 Great Plain Avenue, the Edward Proctor House, 1875
- 1175 Great Plain Avenue, the Dr. Albert Kingsbury House, 1873
- 1189 Great Plain Avenue, the Peady Mills House, 1875
- 1197 Great Plain Avenue, the Timothy Otis Fuller House, 1875

These beautiful houses signify the start of Needham’s transformation from a farming town to a residential suburb. Before 1850, most residents were farmers or craftspeople. The most common house style was the flat-fronted colonial (see #s 1 and 2) – a style that remained unchanged in town for more than a century.

The train came in 1853, and within one year, speculators had bought up Great Plain land and divided it into house lots. Easy access to Boston and more distant towns not only provided new markets for Needham produce, but also brought in new residents, ideas and fashions. Within the next 20 years, numerous elegant residences in the more “modern” Victorian styles would be built on the roads that radiated out from the station – especially Maple Street, Great Plain Avenue and Dedham Avenue – as the Great Plain became the new focus of economic and community activity.