

Needham
History Center &
Museum

www.needhamhistory.org

History Walk Site List

1. McIntosh Tavern Site
2. Noyes Park
3. McIntosh Corner Historic District
4. Townsend House
5. Israel Whitney House
6. C. Davis Mills House
7. Townsend Green
8. Revere Hall, original location
9. Militia Parade Ground
10. First Parish, original location
11. Needham Cemetery
12. Blacksmith's Pond
13. Luther Morse House
14. Amos Fuller House
15. Washburn House
16. Kingsbury-Whitaker House
17. The Great Plain
18. Congregational Church
19. Victorian Houses
20. Mark(ed) Tree Road
21. Trout Pond
22. McIntosh House
23. Town Hall
24. First Parish Church
25. Moseley Building
26. Odd Fellows Hall
27. Roche Bros. original location
28. The Crest
29. Needham Trust Co. Robbery
30. Needham Center Station
31. Needham Branch Library
32. Hotel Nehoiden
33. Appleton Temporary Home
34. Emery Grover Building
35. Jonathan Kingsbury House
36. Early Land Grant, 1636
37. Memorial Park
38. Needham Free Public Library

39. Needham High School
40. N. Holmes House (94 Warren St)
41. Hassam House (837 GPav)
42. Baptist Church

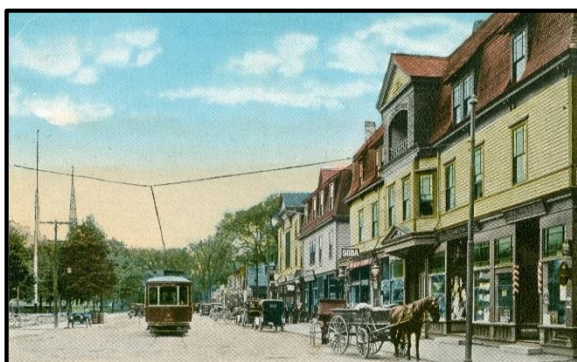
How to Use This Map:

- Each Site is numbered on the map
- At each Site, there is a sign that explains its important history
- The Gold Stars are places where docents are available for information

What are the Squares?



'QR Codes,' which can be read by smartphones as website links for more information and pictures. QR reader apps are available free for smartphones.



Needham Center circa 1910

Additional Sponsors

The Needham Bank . Needham Police Union . Drake Family . Bulfinch Group . St Joseph Parish . First Parish in Needham . Hartney Greymont . Volante Farms . BID Needham . Sam and Florence Graves . Needham Exchange Club . FastSigns



Needham's Walk through History

A Community Event of
The Needham History Center & Museum

**Sunday, October 7 2018,
11 am – 3 pm**



Event Sponsor

